

Floor Lamp

OL02 Series





## Introduction

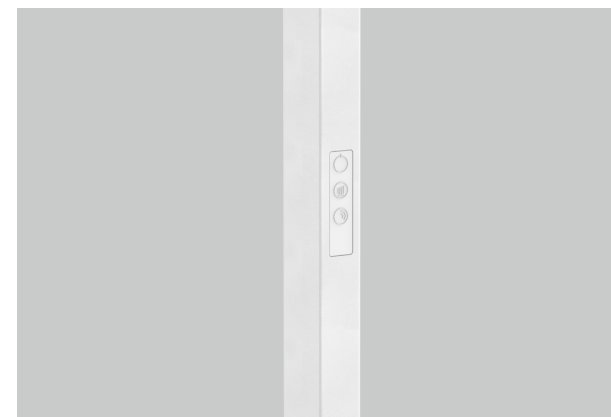
This OL02 freestanding lamp is composed of three parts: flat lamp body, lamp pole and lamp base. With a precise optical design (UGR<16, up 70% & down 30% lighting), it can ensure a more uniform and more comfortable lighting effect. Lamp Pole with: Plug, touchable 0-10V dimmer, light sensor and PIR sensor module. The configuration of the luminaire is triggered by pressing a button and then it's fully automatic, the lighting control modules are interchangeable, which is very suitable for modern office environments.

## Features

- Easy for assembly and maintenance.
- Precise optical design: UGR<16, up 70% & down 30% lighting.
- Lighting sensor and PIR sensor mode interchangeable.
- Plug and play, convenient for different position.
- Touchable 0-10V dimming way.

## Application Areas

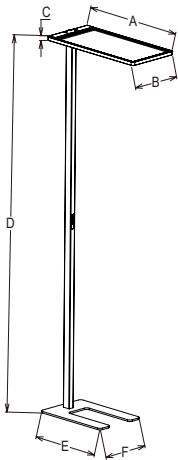
It is specially designed for general lighting applications in office, meeting room, hotel etc.





Technical Data Sheet

Code No.		OL02-75W-DOS	
Dimension(mm)		1925*720*340mm	
Cutout (mm)		-	
Watt(W)		75W	
Rated Input Voltage(V)		AC230V	
Input Voltage(V)		AC220-240V	
LED Module Input		-	
Light Source		SMD2835	
SDCM		<6	
CCT(K)		1-CCT: 3000K/4000K	
CCT Selection DIP Switch		NO	
Luminous Flux (lm) ±5%	Non-DIM	1-CCT	-
	DIM		6300-6800LM
	Non-DIM	3-CCT	-
	DIM		-
CRI		≥80	
Beam Angle (°)		120°	
UGR		UGR<16	
LED Driver		Driver built-in	
Dimming Option		0-10V	
Sensor		PIR sensor	
Emergency Kits		-	
Electrical Class		Class I	
Ingress Protection (IP Rating)		IP20	
Impact Resistance (IK Rating)		-	
Product Finishing(Base)		White RAL9016	
Materials of Optics		PMMA	
Materials of Housing		Aluminum	
Lifetime (hr)		50,000h	
Glow wire test (°C )		-	
Operating Temp. (°C )		-10°C ~30°C	
Storage Temp. (°C )		-20°C ~60°C	
Installation		Pedestal mounted	



Measurement

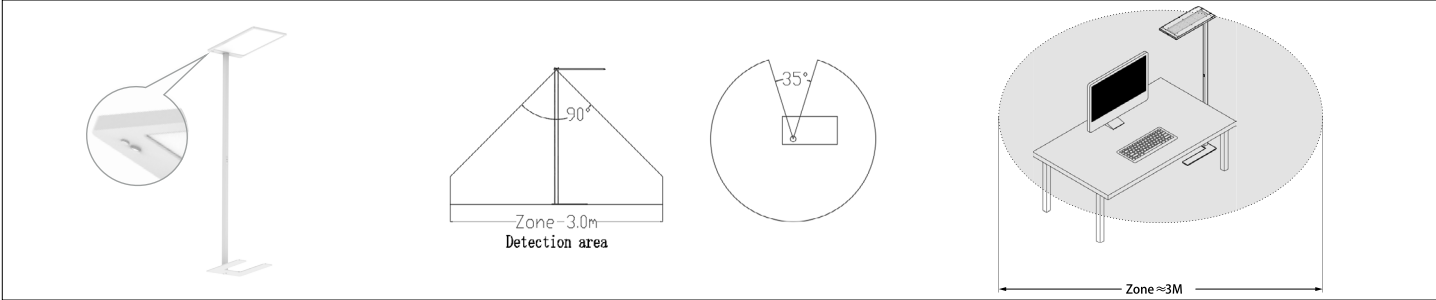
Code	Dimension(mm)			Size(mm)	Product Weight (Kg)		Package weight (Kg)		Carton Size(cm)	Qty/ CTN	20GP (pcs)	40HQ (pcs)
	A	B	C		N.W/PC	G.W/PC	N.W/CTN	G.W/CTN				
OL02-75W-DOS	720	340	21.5	720*340*21.5	2.7	3.2	19.2	20.4	79*38*40.5	6	1260	3240
	D			1900*50*35	3.1	3.4	20.4	21.4	228*17.5*14.5	6	3174	7314
	1900											
	E		F	500*340*8	6.7	7.1	21.3	22	58*41.5*15	3	2433	5589
	500		340									

Driver Datasheet (0-10V)

Total load wattage		75W
Output	Output Voltage range	DC25-40V
	Rated output current	1900mA±5%
	Line Regulation	±5%
	Setup, Rise Time	≤0.5S@230V
	Flickering Index	NO RISK
Input	Input Voltage	AC198-264V
	Rated Input Voltage(V)	AC220-240V
	Frequency	47Hz-63Hz
	Input Current	0.55A
	Rated Input Current	0.38A
	Power Factor	0.93
	THD	<20% @230V
	Efficiency	≥88%
	No load wattage	<0.5W
Protection	Short circuit protection	Pass
	Over voltage protection	Pass
	Over temperature protection	Pass
Safety &EMC	Withstand voltage	I/P-O/P:3.75KVAC5mA 60S; I/P-FG1.6kV 5mA 60S
	Isolation Resistance	I/P-FG O/P-FG: 500VDC, > 100M Ω
	Surge	IEC/EN61000-4-5 (P≥25w L-N:1KV, L/N-PG:2KV)
	EMC Emission	EN55015,EN61000-3-2,EN61000-3-3 GB/T17743,GB17625.1,GB17625.2
	EMC Immunity	EN61000-4-2,3,4,5,6,11 GB/T17626.2,3,4,5,6,11

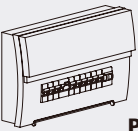
Driver Datasheet (Sensor)

Operating voltage	3.3VDC
Power consumption	0.5W±0.2W
Microwave frequency	-
Transmission power	-
Detection angle	90°
Detection Area	1.5M
Hold time	15min
Daylight sensor	500lux
Stand-by DIM Level	-
Stand-by Period	-
Dimming Range	10%-100%
Microwave ON/OFF function	Yes
Installation Height	-
Operating temperature(°C)	-20°C ~60°C



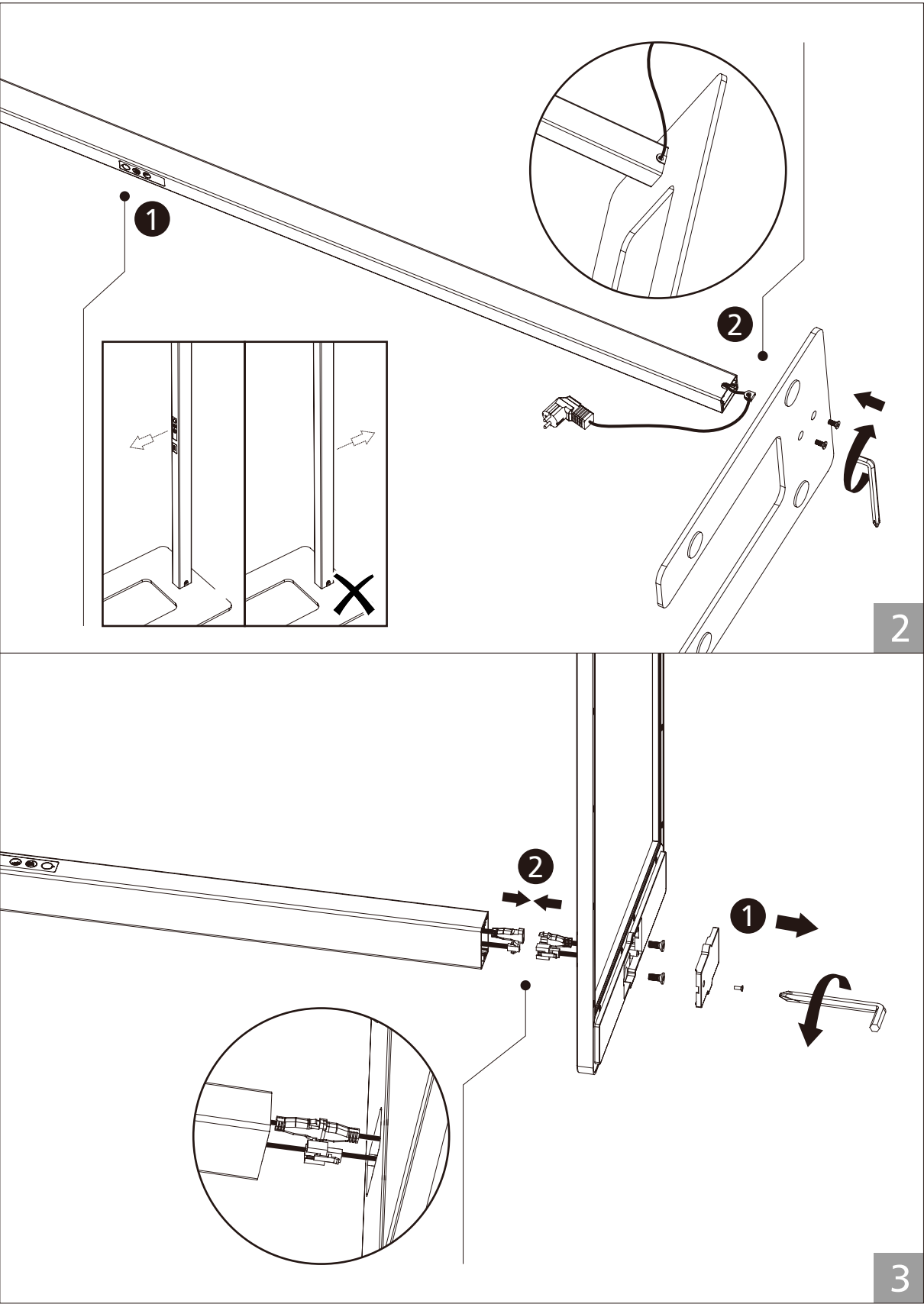
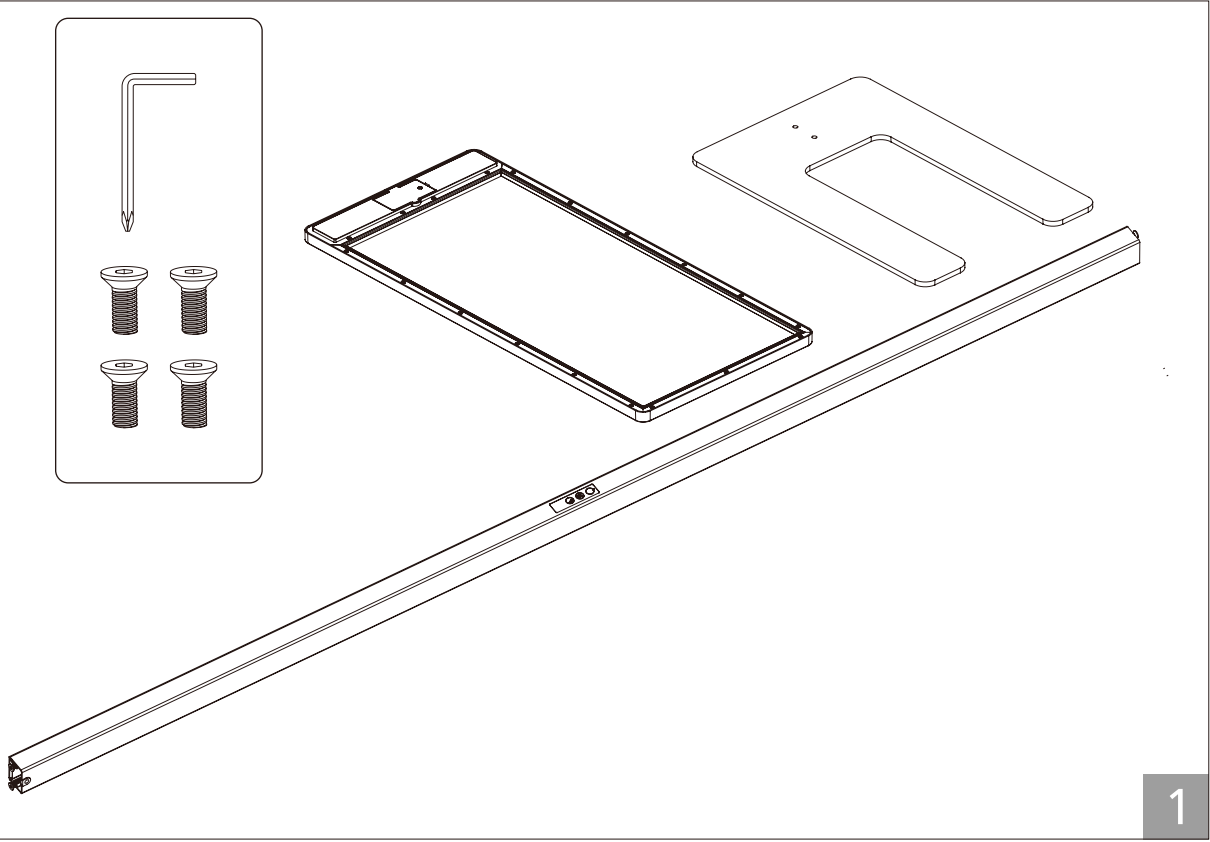
**WARNING**

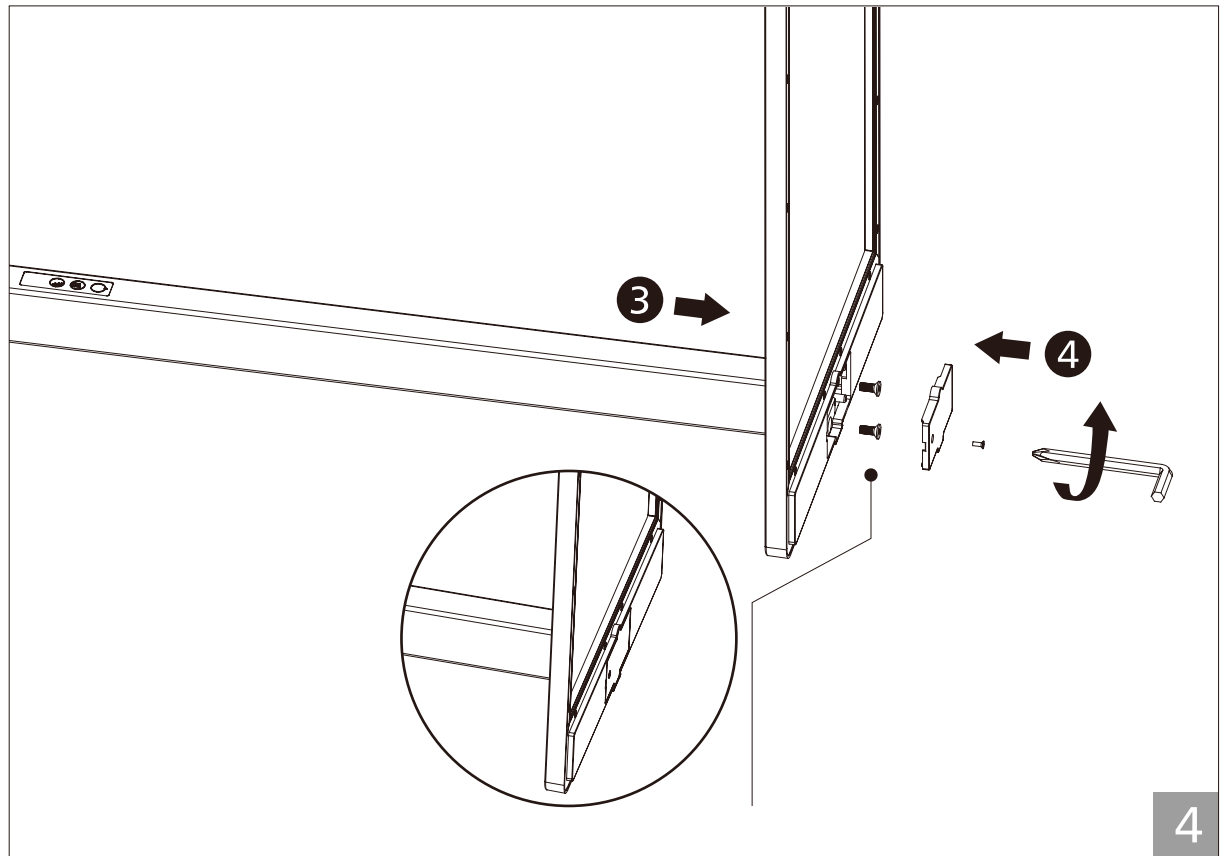
- 1.Switch off before installation/ maintenance
- 2.Switch on only after complete installationand examinationof the circuit.
- 3.Professiona electrician for installationand maintenanceonly.



Turn Off  
Power Supply

**How to install**

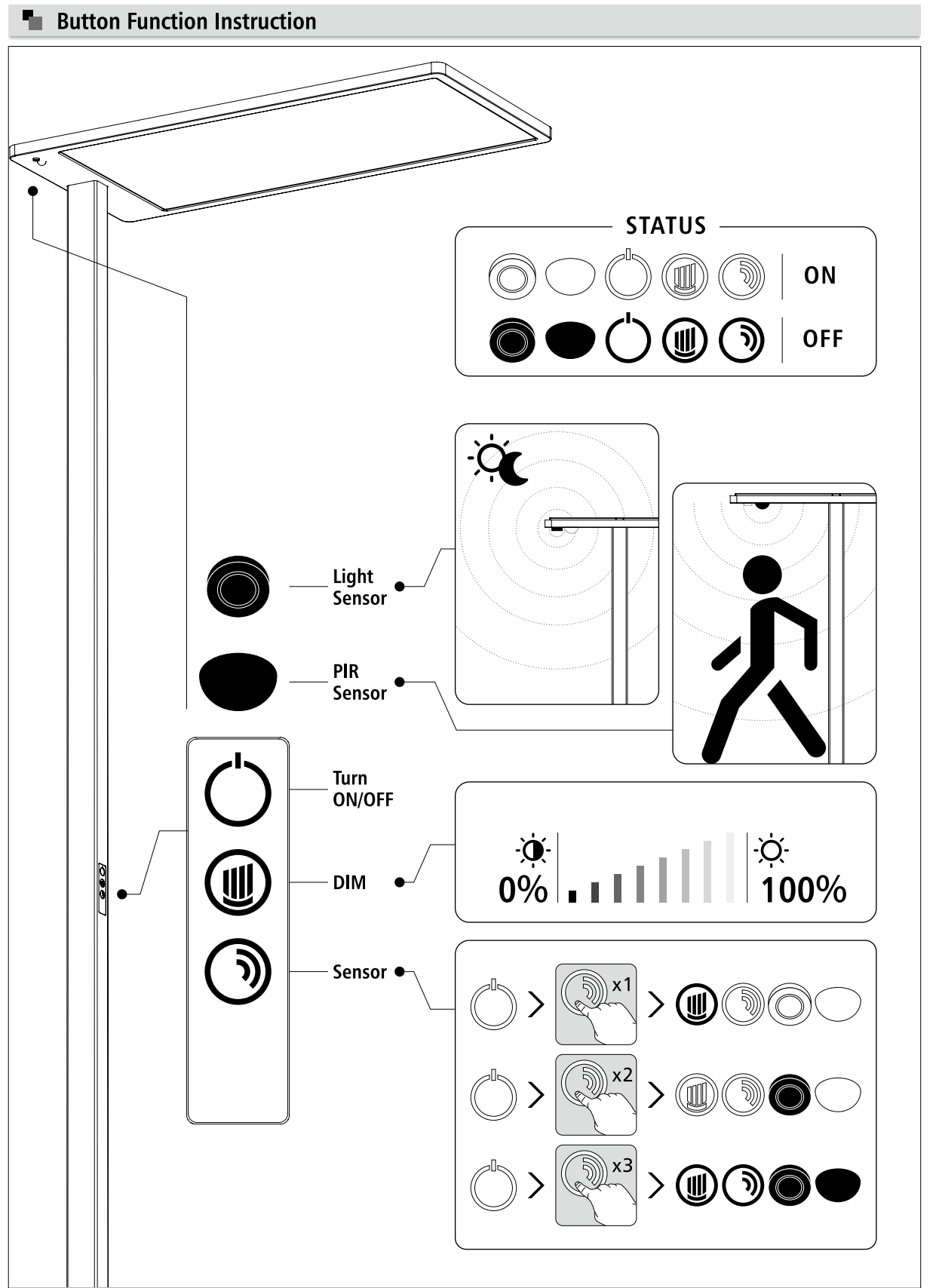




4



5





**www.ba-lighting.no**  
**post@ba-lighting.no Tlf: 371 60 400**  
**Adr.: Holthesvei 2, 4848 ARENDAL**

