

**BA GardenLux**

Power: 25W/50W/75W/120W



UP TO **145** LM/W  
[www.ba-lighting.no](http://www.ba-lighting.no)

**CONSTRUCTION**

- \* Heavy-duty die-cast aluminum housing.
- \* Clean, smooth design blending harmoniously into outdoor environments.
- \* Automatic electrical disconnection: Built-in circuit breaker, tool free electrical gear tray.
- \* UV stabilized polyester powder paint finish for durability and corrosion resistance.
- \* Multiple Mounting options: Post top, side entry and cable suspending installation available.

**OPTICAL SYSTEM**

- \* Precision engineered individual lenses made of optical grade Mitsubishi polycarbonate for maximum light intensity, with Tempered Glass Cover to protect the optics.
- \* Micro-lens systems produce IESNA Type V distributions.
- \* Delivers improved visual comfort by lower glare and providing a wider smoother and more uniform light output.
- \* Optical systems maintain an IP65 rating.
- \* Available in 3000K, 4000K, 5000K, 5700K, 6500K CCT.
- \* Cutoff classification: Cutoff, no uplight pollution.
- \* Minimum CRI of 70, 80, and 90 optional.

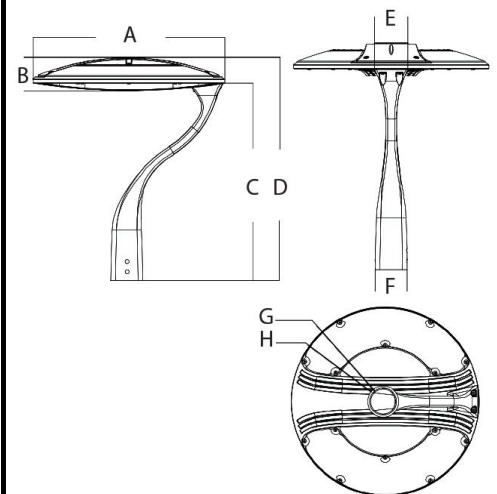
**ELECTRICAL**

- \* 1-10V/ PMW/ Timer dimming, 3 Timer Modes, Dim-to-Off with Standby Power  $\leq 0.5W$ .
- \* Constant current Inventronics driver (For North America) or Meanwell driver (For Europe), 100-277Vac, 50-60Hz.
- \* High efficiency driver: up to 93.5%, minimum efficiency 87.5%.

**FINISH**

- \* Rugged, weather-tight design and 3G Vibration ratings ensure durability even in harsh environments.

up to 145lm/w

**IP SERIES****FIXTURE DIMENSIONS**

A	B	C	D
φ460mm/18.11"	80mm/3.15"	468mm/18.44"	530mm/20.86"
E	F	G	H
78mm/3.08"	76mm/2.99"	φ66mm/2.6"	φ76mm/2.99"

**ORDERING INFORMATION**

WATT	VOLTAGE	LED CHIPS	SENSORS	CCT&CRI	DISTRIBUTION	HOUSING	OPTION
25WiP	NV=100-277V	L3=Lumileds3030	00=Without Sensor	3070=3000K 70CRI	T5=Type V	SG=SILVER GRAY	10KV SPD
50WiP			SN=Motion Sensor	4070=4000K 70CRI			20KV SPD
75WiP			PH=Photocell	5070=5000K 70CRI			R3= 3 Pin Receptacle
120WiP			DV=Dimmable	5770=5700K 70CRI			R7= 7 Pin Receptacle
				3080=3000K 80CRI			
				4080=4000K 80CRI			
				5080=5000K 80CRI			
				5780=5700K 80CRI			

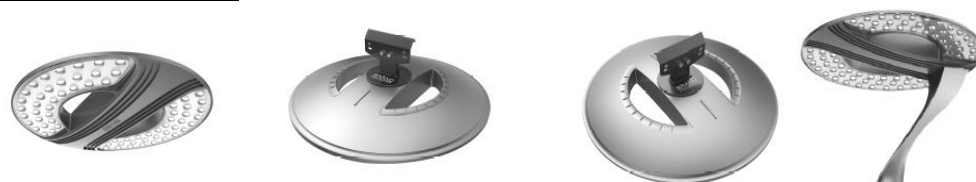
MODEL	Replace MHL Up To	WATTS	INITIAL DELIVERED LUMENS	DISTRIBUTION TYPE	IP & IK	NW	Certificates & Listing
AOK-50WiP	150W	50W	6750LM	Type V	IP65&IK08	19.6lbs (8.9kg)	UL cUL DLC premium
AOK-75WiP	200W	75W	9750LM	Type V	IP65&IK08	21.8lbs (9.9kg)	
AOK-120WiP	350W	120W	15000LM	Type V	IP65&IK08	22.5lbs (10.2kg)	

## FOR NORTH AMERICAN MARKET

MODEL	Replace MHL Up To	WATTS	INITIAL DELIVERED LUMENS	DISTRIBUTION TYPE	IP & IK	NW	Certificates & Listing
AOK-25WiP	75W	25W	3625LM	Type V	IP65&IK08	19.6lbs (8.9kg)	ENEC CB CE RoHS
AOK-50WiP	150W	50W	6750LM	Type V	IP65&IK08	19.6lbs (8.9kg)	
AOK-75WiP	200W	75W	9750LM	Type V	IP65&IK08	21.8lbs (9.9kg)	
AOK-120WiP	350W	120W	15000LM	Type V	IP65&IK08	22.5lbs (10.2kg)	

## INSTALLATION OPTIONS

## CABLE SUSPENDED



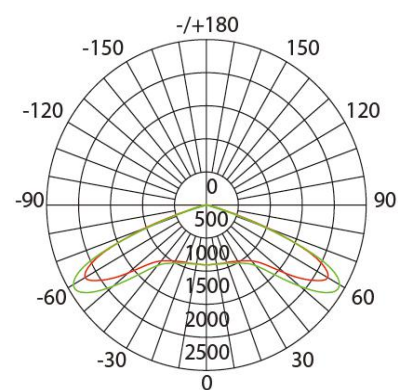
## SIDE ENTRY



## POST TOP



## PHOTOMETRY



AVERAGE BEAM ANGLE(50%): 145.2 DEG

UNIT: cd

C0/180 lc:905.3  
73.0,73.0C90/270 lc:905.3  
72.2,72.2

All published Luminaire photometric testing performed to IESNA LM-79-08 standards by a NVLAP accredited Laboratory.