



LED Wall Lamp
WL75 Series



Introduction

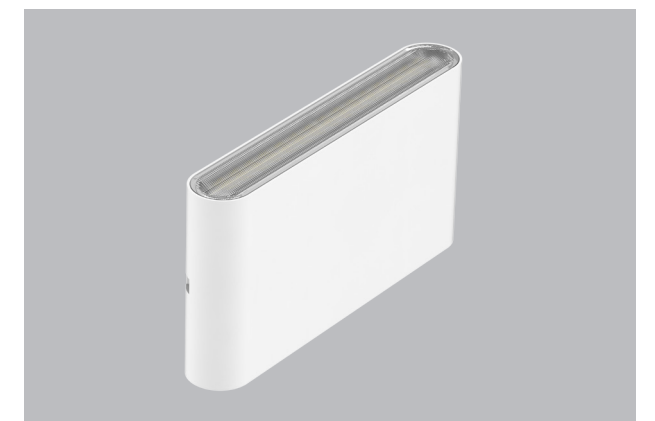
WL75 is an ultra-thin design which looks like a power bank. It adopted SMD light source in both ends with PC lens, wall-washing design for optic effect, so it can do higher and further lighting. For material part, it adopted ADC12 Aluminium which offers a great heat dissipation. Besides, it is an up and down lighting design which can achieve a better atmosphere. IP65 waterproof will suit to a wider application area.

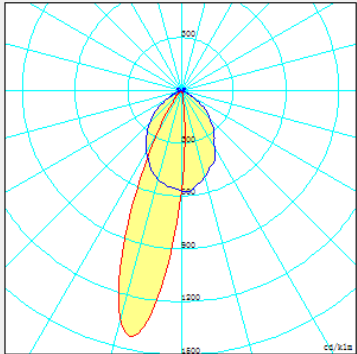
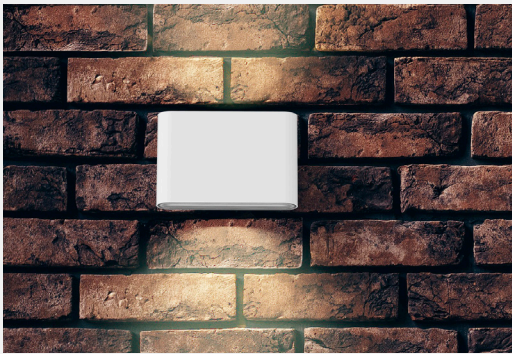
Features

- Ultra-thin with only 30.5mm thickness.
- Up & down lighting design.
- Wall-washer design with polarized lens 8 degree.
- IP65 waterproof.
- Interchangeable CCT(3000K+4000K+5700K)with slide switch.
- Internal flicker free driver.

Application Areas

It is designed for indoor and outdoor lighting applications hotel, park, and corridors etc.

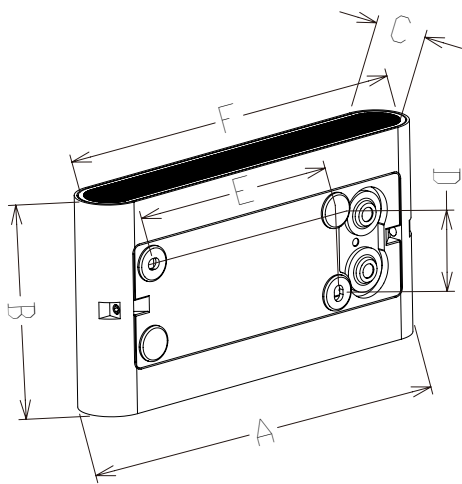




Polarized lens 8 degree

Technical Data Sheet

Code No.			WL75-6W	WL75-6W-C3	WL75-10W	WL75-10W-C3
Dimension(mm)			135*90*30.5		175*90*30.5	
Cutout (mm)			-			
Watt(W)			6W		10W	
Rated Input Voltage(V)			AC220-240V			
Input Voltage(V)			AC230V			
LED Module Input			-			
Light Source			SMD2835			
SDCM			<6			
CCT(K)			3000K/4000K/5000K/5700K		3000K/4000K/5700K	
CCT Selection DIP Switch			YES			
Luminous Flux (lm) ±5%	Non-DIM	1-CCT	530-670		940-1050	
	DIM		-			
	Non-DIM	3-CCT	540-680		950-1060	
	DIM		-			
CRI			80			
Beam Angle (°)			Polarized lens 8°			
UGR			-			
LED Driver			Built-in			
Dimming Option			NO			
Sensor			NO			
Emergency Kits			NO			
Electrical Class			Class I			
Ingress Protection (IP Rating)			IP65			
Impact Resistance (IK Rating)			IK08			
Product Finishing(Base)			White RAL 9016/Black RAL 9005			
Materials of Optics			PC			
Materials of Housing			Aluminum ADC12			
Lifetime (hr)			L 70B50 50000hr			
Glow wire test (°C)			750°C			
Operating Temp. (°C)			-20°C ~45°C			
Storage Temp. (°C)			-20°C ~65°C			
Installation			Wall mount			



Measurement

Code	Dimension(mm)			D	E	Size(mm)	Product Weight (Kg)		Package weight (Kg)		Carton Size(cm)	Qty/CTN	20GP (pcs)	40HQ (pcs)
	A	B	C				N.W/PC	G.W/PC	N.W/CTN	G.W/CTN				
WL75-6W	135	90	30.5	36	66.1	135*90*30.5	0.47	0.62	11.2	12.4	39*33.5*20	18PCS	19620	47970
WL75-10W	175	90	30.5	34.5	101.5	175*90*30.5	0.57	0.72	13	14.2	41.5*39*20	18PCS	14202	35640

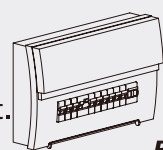
Driver Datasheet (Non-dimmable)

Total load wattage		6W	10W
Output	Output Voltage range	DC:30-40V	
	Rated output current	145mA	
	Line Regulation	±5%	
	Setup, Rise Time	≤0.5S	
	Flickering Index	<3%(NO RISK)	
Input	Input Voltage	AC220-240V	
	Rated Input Voltage(V)	AC230V	
	Frequency	50/60Hz	
	Input Current	0.038A	0.055A
	Rated Input Current	0.033A	0.048A
	Power Factor	0.8 @230V	
	THD	-	
	Efficiency	82%@230V	
	No load wattage	<0.5W	
Protection	Short circuit protection	Pass	
	Over voltage protection	Pass	
	Over temperature protection	Pass	
Safety &EMC	Withstand voltage	I/P-O/P:3.75KVac, <5mA 60S	
	Isolation Resistance	I/P-O/P: 500VDC, ≥100M Ω	
	Surge	IEC/EN61000-4-5(P<25W; L-N:500V)	
	EMC Emission	EN55015, EN61000-3-2	
	EMC Immunity	EN61000-4-2,3,4,5,6,8,11; EN61547	

Installation Instruction

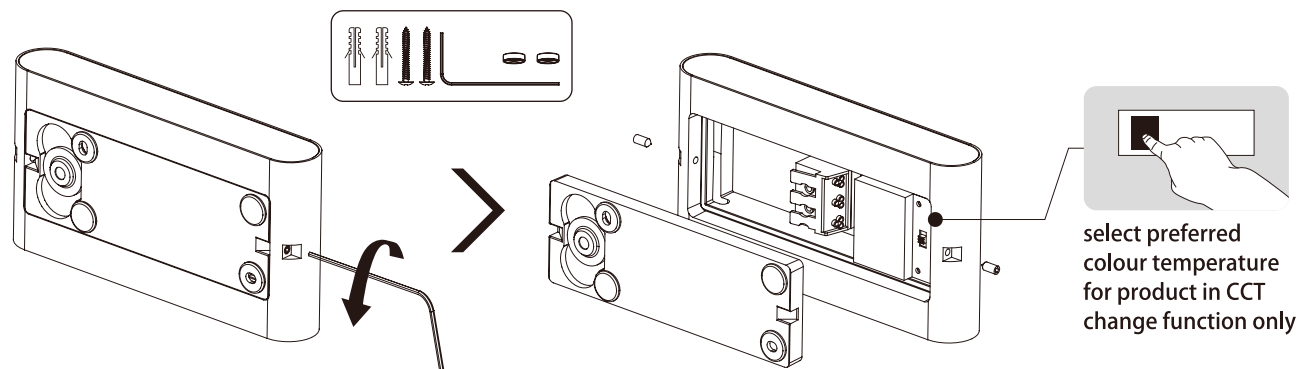
WARNING

1. Switch off before installation.
2. Switch on only after complete installation and examination of the circuit.
3. Professional electrician for installation and maintenance only.

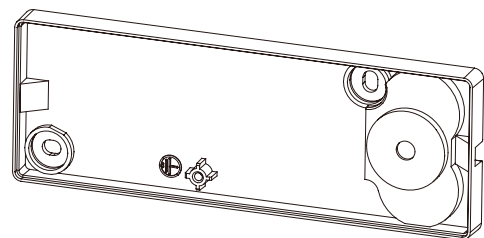


Turn Off
Power Supply

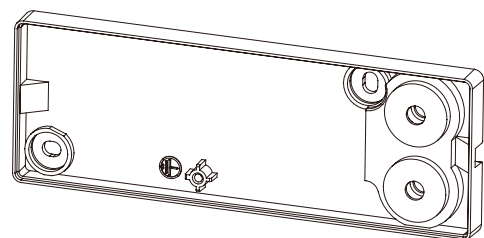
Wall mounted installation



Mains Cable entry (1X)



Mains Cable entries (2X)



1

1

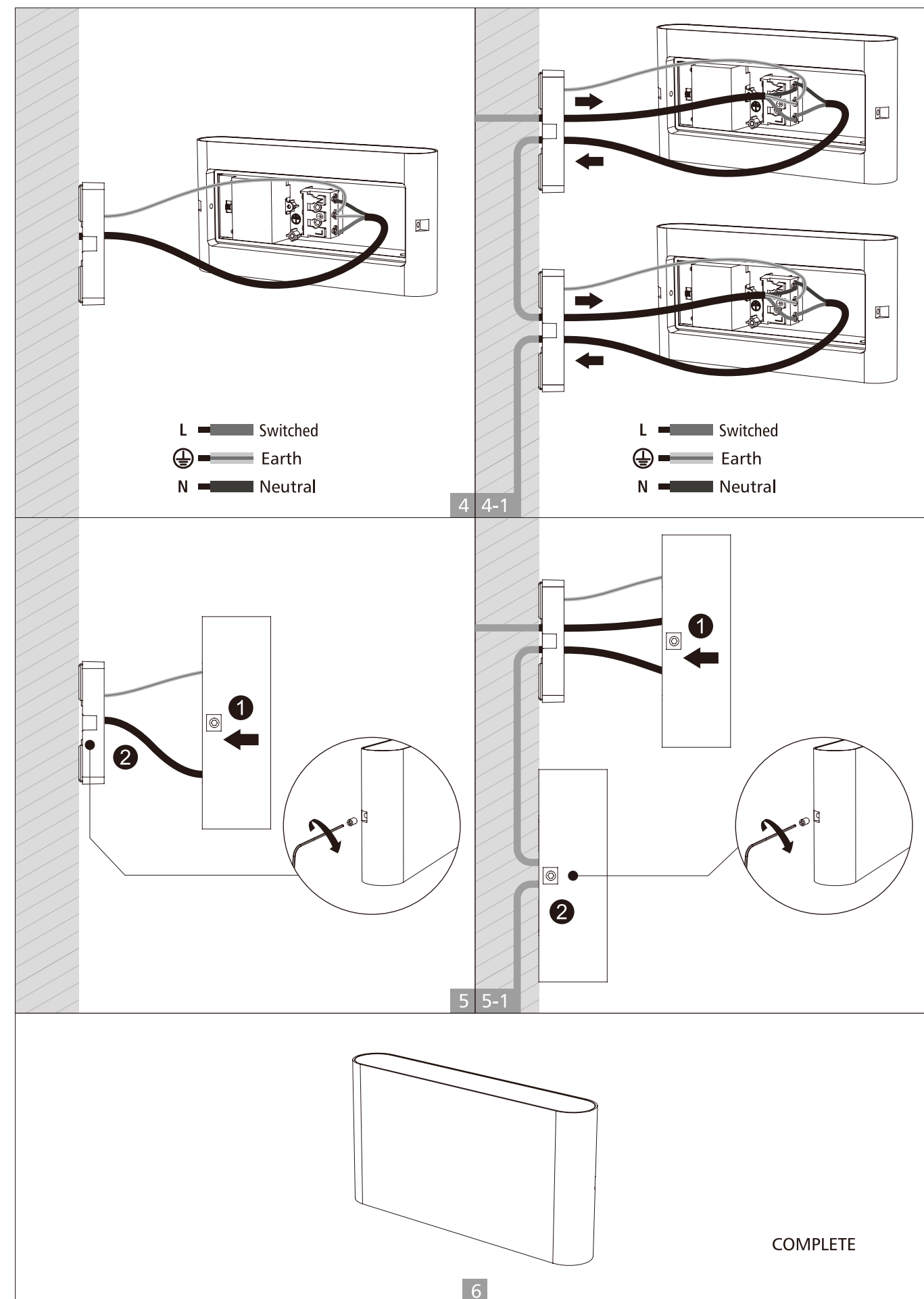
2

2

3

2

3



L — Switched
Earth — Earth
N — Neutral

L — Switched
Earth — Earth
N — Neutral

4 4-1

5 5-1

6

COMPLETE


ECO
Specifications


STD
Specifications


PRO
Specifications


ODM
Specifications


INT
Intelligent

ERA
LIGHTING